

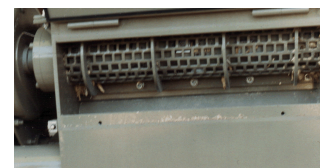
hl 2/7/10

The Scanhugger HL 2/7/10 is an all-round shredder, capable of shredding all types of woodwaste (solid wood, particleboard, MDF, cardboard, paper) depending on the material to be processed and the desired chip quality, the machine can be mounted with different screen sizes.

Scanhugger HL 2/7/10 er en all-round træknuser, der er velegnet til knusning af alle typer træaffald (massivt træ, spånplade, MDF, pap, papir, kartonageaffald). Afhængig af materialetype og ønsket flisstørrelse kan maskinen monteres med forskellige soldperforeringer til henholdsvis fine/grove flistyper.



Rotor/knife
Rotor/kniv



Technical data / Tekniske data.

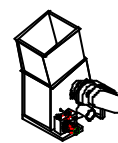
Hopper dimension / Magasinmål		671 x 1000 mm
Hopper volume / Magasinindhold		0,6 cbm
Rotor diameter / Rotor diameter		Ø 140 mm
No. of knives / Knivantal	*	20
No. of counterknives / Antal modstål		2
Rotor speed / Rotoromdrejninger	**	100 ⁻¹
Main motor / Hovedmotor	**	7,5 - 11 kW
Screen perforation / Soldperforering	**	15 - 40 mm
Chip length / Flislængde	**	15 - 30 mm
Capacity / Kapacitet	**	90-250kg/60min
Weight / Vægt		1400 kg
Sound level / Lydtrykniveau L _{pa}	***	81 dB

* Depending on rotor and type of knife

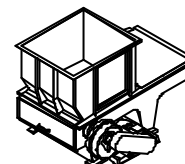
** Depending on motor size, material and screen perforation

*** In accordance with ISO/DIS 11204, prEN 691

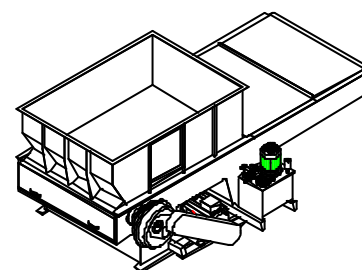
Technical alterations reserved / Ret til tekniske ændringer forbeholdes



HL 2 SERIE

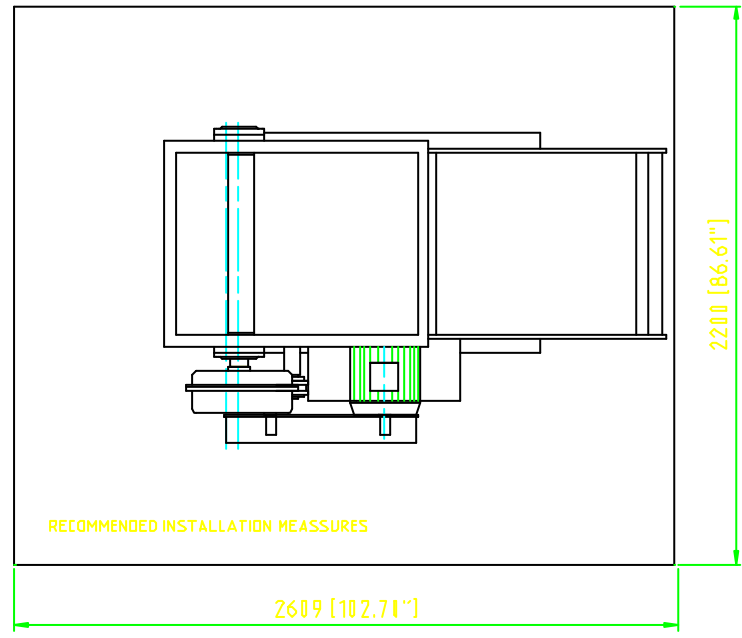
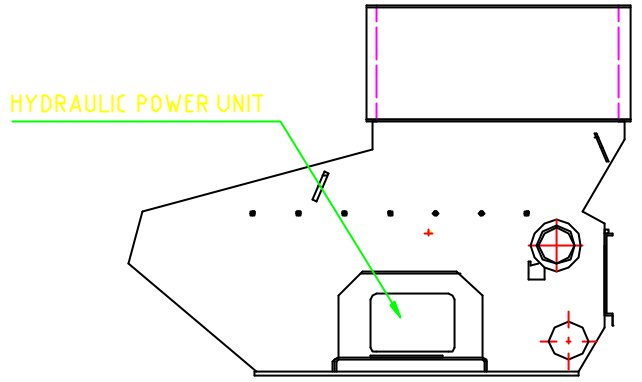
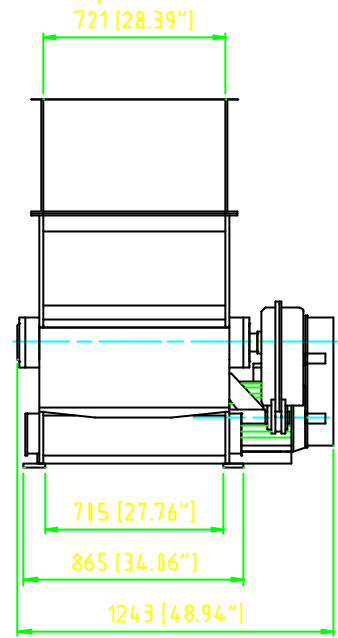
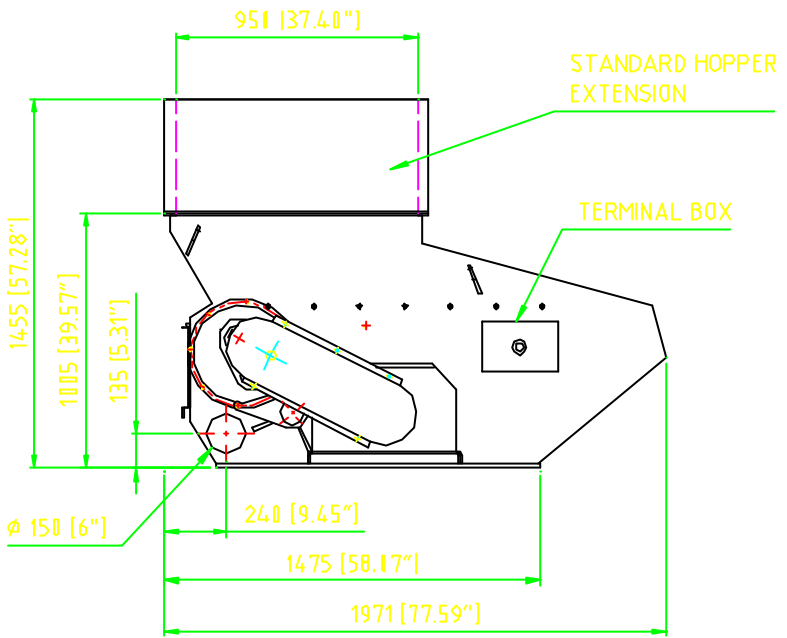
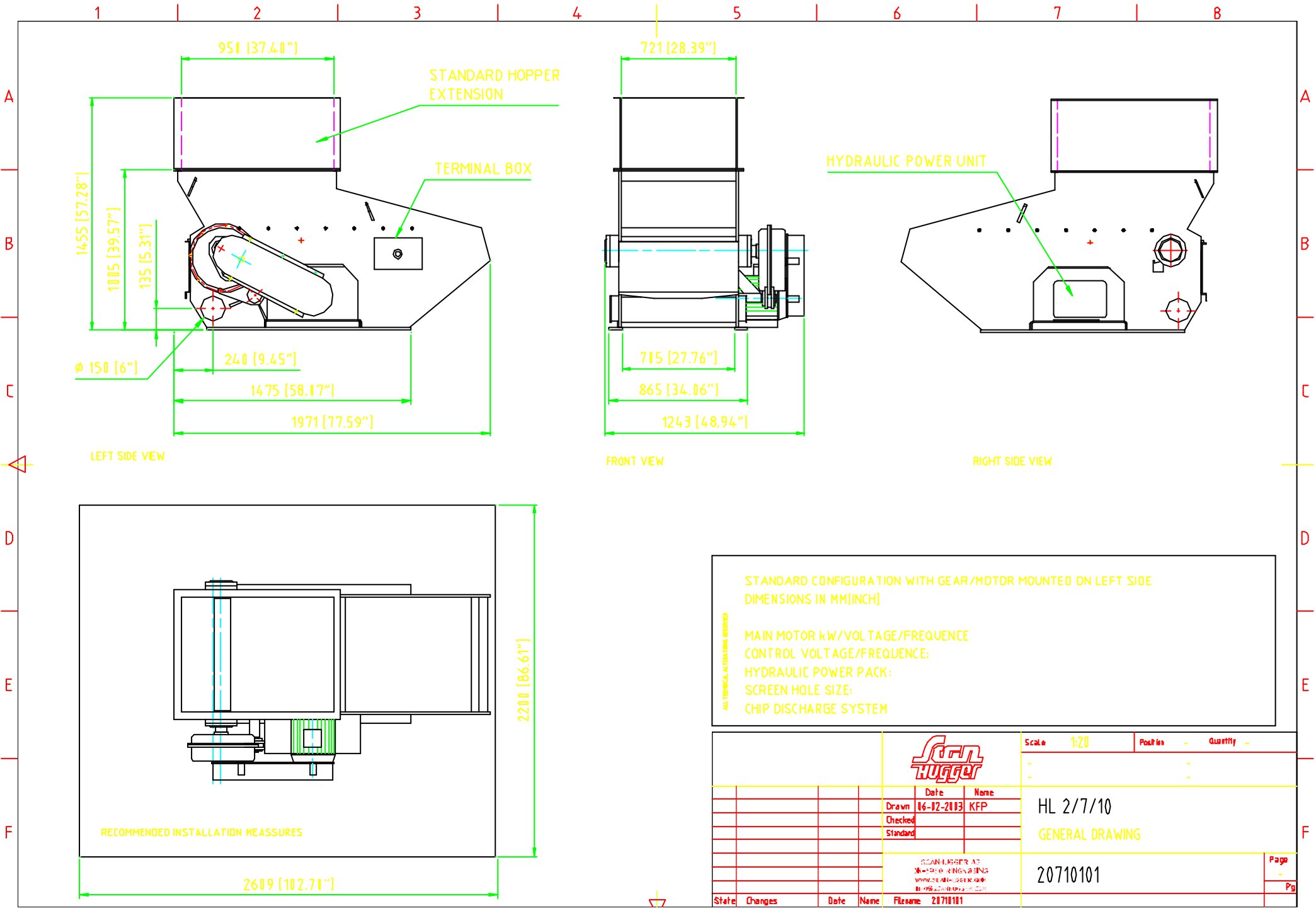


HL 3 SERIE



HL 4 SERIE

Scanhugger a/s
 Herningvej 144 - 6950 Ringkøbing
 Tel. +45 9734 3111 Fax. +45 9734 3175
 www.scanhugger.com



STANDARD CONFIGURATION WITH GEAR/MOTOR MOUNTED ON LEFT SIDE
 DIMENSIONS IN MM(INCH)

ALL DIMENSIONS AUTOMATICALLY APPROVED

MAIN MOTOR kW/VOLTAGE/FREQUENCY
 CONTROL VOLTAGE/FREQUENCY:
 HYDRAULIC POWER PACK:
 SCREEN HOLE SIZE:
 CHIP DISCHARGE SYSTEM

		Scale	1:20	Positio	-	Quantity	-
		Drawn	16-12-2013	Name	KFP	HL 2/7/10	
		Checked		GENERAL DRAWING			
		Standard					
		SCAN HOGGER AB Kungälv, SWE-415 01 www.scanhogger.com Tel: +46 31 80 80 00		Page	-		
				20710101	Pg		
State	Changes	Date	Name	Filename	2171011		